

Approaches to fresh cow health assessments in dairy herds

THE term "fresh" cow refers to recently calved cows entering the milking herd, but still in the transition phase – that crucial period when the cow is adapting to the lactating cow environment, increasing its feed intake, but already producing around 25 litres to 30 litres (sometimes much more) per day.

It is well recognised that a transition programme to manage cows through the critical period around calving extends into this freshly calved period and many "fresh cow" programmes incorporate cows and data assessments for at least several weeks post-calving.

Many herds recognise the need to manage fresh calved cows and heifers differently to the main milking groups, but approaches differ widely – both in type of accommodation and length of stay in the fresh group (Figure 1).

It is important, as veterinary advisors, that we engage with farmers about the importance of regularly assessing fresh cow health and performance. This is often achieved as part of the routine visit (for example, through post-calving checks and observations about the housing environment) and off the back of "gateway" diseases such as left displaced abomasum (LDA) and metritis/endometritis events, but, perhaps less often, involves

JOHN REMNANT
BVSc, CertAVP, MRCVS

ANDREW HENDERSON
BVSc, CertAVP(Cattle), MRCVS

JAMES BREEN
BVSc, PhD, DCHP, MRCVS

discuss tests and techniques used to evaluate the health of dairy heifers in the transition period between recent calving and entering the milking herd

ABSTRACT

The assessment of fresh cow health in dairy herds is often performed at "cowside", with a number of subjective tests available to measure the effectiveness of the transition programme and the ability of the cow to be productive during the lactation, while coping with the inevitable demands of the lactation on its health and welfare.

Cowside assessments must be coupled with analysis of records regarding fresh cow health and performance and used to inform decision-making regarding environment and husbandry.

routine analysis of data. This article reviews some of the more common fresh cow assessments and discusses practical ways of implementing these on farm.

Data analysis
While great emphasis is placed on individual fresh cow examination and monitoring, it must not be forgotten that assessment of records will be of great importance as an "early warning system" for fresh cow health and performance.

Some key areas of data analysis for fresh cow assessments are discussed next.

Event data (LDA, mastitis, endometritis)

Diseases of the fresh cow period should be monitored against achievable targets and inform the veterinary advisor about current fresh cow health. Examples include:

- rate of clinical milk fever (target less than five per cent);
- rate of retained fetal membranes in cows greater than 24 hours calved (target less than five per cent);
- LDA rate (target less than three per cent annually – even for herds averaging greater than 10,000 litres);
- dry period origin clinical mastitis rate (target less than one in 12 fresh cows affected in the first 30 days post-calving); and
- endometritis (target less than 10 per cent for cows more than 21 days calved).

LDA in particular is very informative about the transi-



Figure 1. A fresh cow group housed in a loose yard for one week post-calving and showing a very high stocking rate.

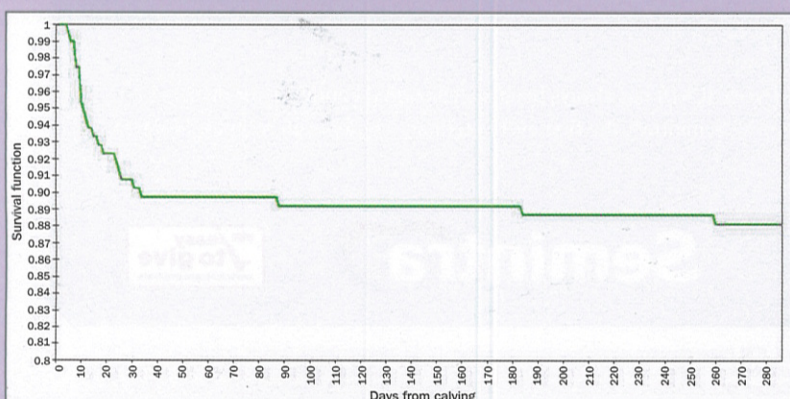


Figure 2. Decreased survival to LDA in a herd where almost 10 per cent were affected in the first three weeks of lactation during the year of interest.

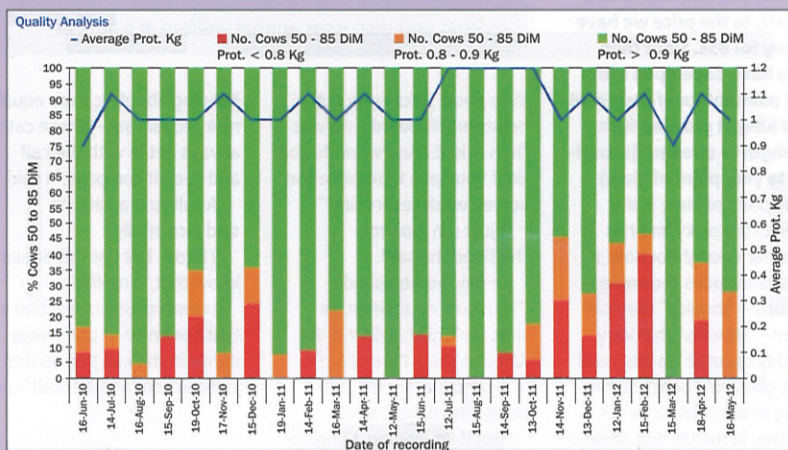


Figure 3. An increase in the percentage of cows that have reached 50 days in milk and are producing insufficient milk protein suggests issues with negative energy balance in fresh cows during winter 2012 in this herd.

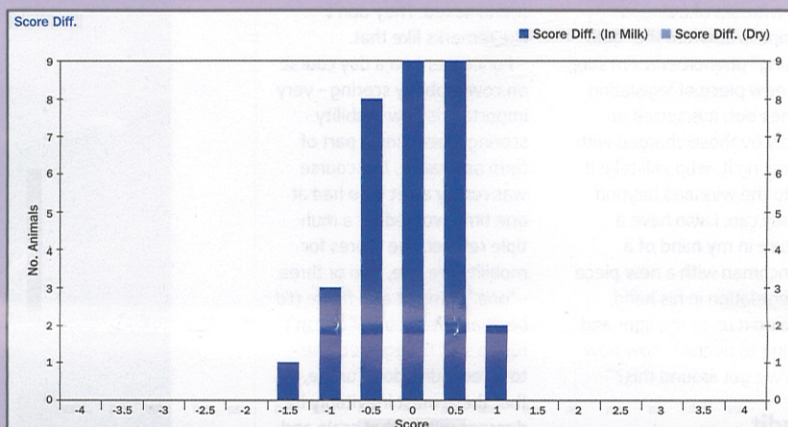


Figure 4. Body condition score (BCS) difference between calving and early lactation (40 days to 80 days calved) during the period of interest, showing very few cows are losing greater than 0.5 BCS points.

tion period – a poor survival rate for fresh cows to an LDA event is indicative of inadequate transition management (Figure 2).

Milk recording data (first test day post-calving: yield, constituents, cells)

Rapid increases to peak yield at 30 days to 40 days are often not recommended as this will result in a greater energy deficit due to the slower increase in peak dry matter intakes post-calving. However, a failure to reach predicted yields in fresh cows at 30 days to 40 days will suggest issues with the transition period; a wide range of yields during the fresh cow period will also point to issues with intakes and/or health.

Milk constituent data can also be monitored to inform about fresh cow health – particularly milk protein percentage as this will increase with improved energy status (thought to be via an increase in microbial protein produc-

tion in the rumen, but also due to sparing of amino acids as more starch bypasses the rumen to the small intestine; Hayton et al, 2012).

However, care must be taken with analysis of this data – particularly if using butterfat to protein ratio (FPR), as butterfat is influenced by other factors independent of energy status, particularly ration composition. For example, a UK study concluded FPR had a much reduced ability to predict an early conception compared with other combinations of milk quantity and constituents, including a higher percentage of milk protein at the first and second test days in lactation (Madouasse et al, 2010).

Examples of production parameters that can be monitored include protein production in the first 50 days of lactation (target greater than 1kg for cows averaging more than 7,000 litres in lactation; Figure 3).

Finally, monitoring somatic

cell count at the first test day will provide information regarding the likely udder health status of fresh cows; a fresh calver infection rate of more than 10 per cent should stimulate discussions regarding control of mastitis in the post-calving period.

Cow data (such as condition and mobility scores – if available)

If cow data regarding condition and other health indicators such as mobility and hock scores are collected then ongoing analysis of this data is vital to encourage continued scoring, as well as informing the advisor about current fresh cow management.

An excellent example is body condition scoring (BCS). Generally accepted as a measurement of energy reserves, but still under-utilised in practice, BCS is critical to monitoring the fresh cow period. BCS is often done cowside (see further on), but rarely systematically and routinely monitored.

While there are many ways of analysing BCS data, including the mean group score during the fresh period and the proportion of fresh cows with BCS outside tar-

Generally accepted as a measurement of energy reserves, but still under-utilised in practice, body condition scoring is critical to the monitoring of the fresh cow period.

IMAGE: TotalVet, QMMMS/SUM-IT

IMAGE: TotalVet, QMMMS/SUM-IT

IMAGE: TotalVet, QMMMS/SUM-IT

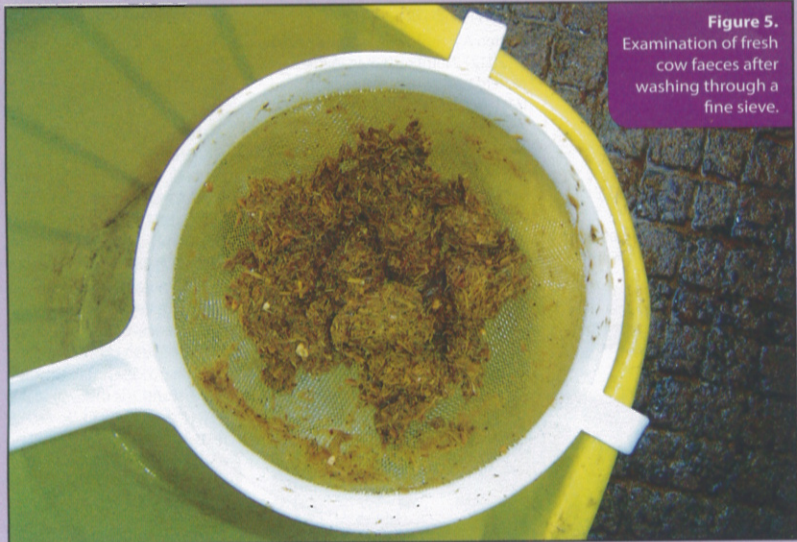


Figure 5. Examination of fresh cow faeces after washing through a fine sieve.

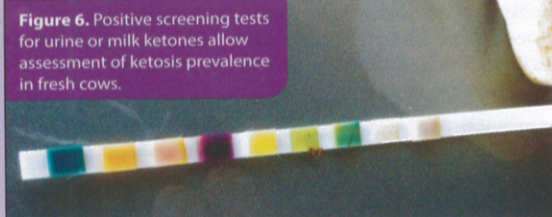


Figure 6. Positive screening tests for urine or milk ketones allow assessment of ketosis prevalence in fresh cows.

“tracking” of fresh cows and monitoring of the number of apparent new lameness cases. This can also be divided by the number of recovered cases to give the net lameness index (Archer et al, 2009) where values greater than one indicate a worsening of foot health in the fresh cow period (Figure 7). This, therefore, brings us full circle and demonstrates again the need to “join up” cowside data with ongoing analysis of this data.

between 10 days to 14 days may be all that is available – but how do we interpret a single positive BHB result?

Sampling to monitor prevalence of disease requires at least nine and sometimes 12 samples to increase the probability prevalence of the disease in question (in this case, ketosis) is at least as high as the threshold set; spreadsheet tools are available (for example, www.ausvet.com.au/content.php?page=software)

that can assist the practitioner in decision-making based on results obtained and the sample size used.

Mobility and lameness

Assessment of mobility allows rapid identification and treatment of fresh cows with impaired mobility and lameness.

Mobility scoring of fresh cow groups very regularly (more frequently than monthly) will also allow the

Environment examination

Finally, fresh cow assessments must always include the environment of the fresh cow groups and husbandry practices.

Useful conversations can be had at the **page 8**

get range, the rate of loss through the fresh period is also important (Figure 4).

Cowside examination

Monitoring the success of the fresh cow period also needs to include cowside observations and measurements, both to inform data analysis (for example, BCS monitoring) and to investigate trends in the data further (for example, subclinical ketosis).

Examples of cowside examinations that should be discussed with farmers as part of fresh cow assessments include the following.

Rumen fill and faecal consistency

A subjective scoring system has been developed to visually describe rumen fill. Research has suggested this can be a valid indicator of dry matter intake, but timing of scoring is critical (Burfeind et al, 2010), as rumen fill will tend to be higher in the evening than the morning, making periodic assessment during routine visits potentially difficult to interpret.

Another simple cowside assessment involves scoring faecal consistency and examining faeces for abnormalities – particularly the presence of long (greater than 1.25cm) fibre particles (Figure 5).

Although faecal examination is often performed, little scientific evidence exists on the relationship between faecal abnormalities and issues with the fresh cow ration – particularly as individual cows and the effect of high milk yields and increased outflow will vary.

Metabolic markers – non-esterified fatty acids and ketones

Monitoring ketosis often requires sampling strategies that concentrate on the fresh cow period – particularly the first two weeks of lactation. Cowside milk and urine dipsticks and blood ketone meters allow rapid assessment of individual cow beta hydroxybutyrate (BHB) as part of a fresh cow monitoring programme (Figure 6) and this may be supplemented with serum values.

Both non-esterified fatty acids (NEFA) in pre-calving cows and BHB in fresh cows should be monitored – type II ketosis, characterised by infiltration of the liver by fat, can result in elevated NEFA, but normal BHB very early in lactation and, therefore, testing for ketones alone in fresh cow groups may miss these (Hayton et al, 2012).

Fresh cows should be sampled for BHB in the first two weeks and a target prevalence of 15 per cent of animals testing “positive” may

be applied – but sample size is important. For example, sampling six fresh cows calved

The art of skin treatment

CORTAVANCE™, CHARACTERISING NON-SYSTEMIC THERAPY

- Not just for hot spots! With no known incompatibilities, Cortavance™ adds to your palette of therapeutic options
- A highly potent topical treatment that you can use on up to a third of the dog's body each day*
- Designed to work rapidly, and only in the skin, with negligible systemic absorption**
- Excellent acceptance, with minimal side effects builds the framework for a comfortable user experience

TRY IT TODAY - CALL YOUR TERRITORY MANAGER OR 01359 243243 FOR MORE INFORMATION

*At recommended dose level. **In 12 dogs suffering from atopic dermatitis, after topical application on the skin at the recommended therapeutic dosage for 28 to 70 consecutive days, no noticeable effect on the systemic cortisol level was observed.

Cortavance™ contains hydrocortisone aceponate. Legal category UK **POM-V** Legal category Ireland **POM**
 Indications for use: For the symptomatic treatment of inflammatory and pruritic dermatoses in dogs.
 Virbac Ltd, Woolpit Business Park, Windmill Avenue, Woolpit, Bury St Edmunds, Suffolk, IP30 9UP.
 Tel +44(0)1359 243243 Fax +44(0)1359 243200. UK: Email enquiries@virbac.co.uk www.virbac.co.uk.
 Distributed in Ireland by C&M Veterinary Distributors Ltd, Limerick, IE.
 Tel 353 61 314 933. ROI: Email enquiries@virbac.ie www.virbac.ie



Marketing authorisation number: EU/2/06/069/001

Passionate about animal health



→ continued from page 7

end of the routine visit off the back of data analysis, and potential solutions and

modifications put forward immediately and proactively.

While solutions are sometimes basic (Figure 8), discussions around fresh cow

health and performance are often more complex and should only be had in the light of data analysis and individual cow assessments.

References

Archer S C, Green M J and Huxley J N (2009). The dynamics of dairy herd mobility. *Proceedings Cattle Lameness Conference*, University of Nottingham: 49-50.

Burfeind O, Sepúlveda P, von Keyserlingk M A et al (2010). Technical note: evaluation of a scoring system for rumen fill in dairy cows. *J Dairy Sci* 93(8): 3,635-3,640.

Edmonson A J, Lean I J, Weaver L D et al (1989). A body condition scoring

chart for Holstein dairy cows. *J Dairy Sci* 72(1): 68-78.

Hayton A J, Husband J and Vecqueray R (2012). Nutritional management of herd health. In Green M (ed), *Dairy Herd Health*, CAB International, Wallingford: 227-278.

Madouasse A, Huxley J N, Browne W J et al (2010). Use of individual cow milk recording data at the start of lactation to predict the calving to conception interval. *J Dairy Sci* 93(10): 4,677-4,690.



JOHN REMNANT (above), **ANDREW HENDERSON** (top right) and **JAMES BREEN** (right) are staff at the University of Nottingham School of Veterinary Medicine and Science, who divide their time between clinical work at Orchard Veterinary Group in Glastonbury, the Scarsdale Veterinary Group in Derby, research in dairy herd fertility and mastitis, teaching and consultancy. They work in dairy herd health and contribute to teaching the final-year undergraduate herd health two-week clinical rotation, which focuses on problem solving and data monitoring at herd level, rather than the individual animal.

Score	Apparent Cure (49%)										Apparent Chronic (18%)									
	22	90	244	254	270	286	355	371	6	17	34	92	211	235	257	268				
2 or 3	376	377	419	428	500	537	575	595	294	300	658	667	675	676	678	699				
	596	709	813	830	1193			701	764	815	818	823	981							
This Score	Apparent Sound (51%)										Apparent New Lame (20%)									
	30/08/12	21	53	58	79	110	111	113	118	33	35	170	179	201	262	277	280			
0 or 1	120	126	133	139	168	186	203	224	343	413	431	573	671	672	697					
	243	267	288	296	297	307	309	317												
	341	342	345	353	368	403	449	466												
	502	505	506	533	543	558	560	562												
	579	599	643	668	679	683	692	747												
	758	759	811	814	816	817	824	829												
	860	867	910	1580	2681															

Figure 7. Apparent new lame (total 15) and apparent cure (total 21) using mobility score data in first lactation heifers. In this example the Net Lameness Index is less than one.

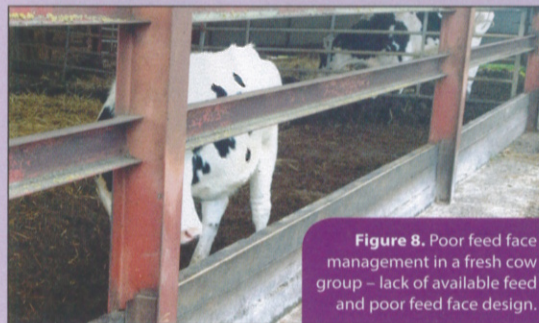


Figure 8. Poor feed face management in a fresh cow group – lack of available feed and poor feed face design.

Herd health plan helps beef producer cut costs

A PEMBROKESHIRE beef producer has reduced antibiotic use and vet bills associated with bovine viral diarrhoea (BVD) after implementing a herd health plan.

Gerwyn Williams' herd of 50 continental-cross suckler cows at Upper Swmbarch, Letterston was screened for BVD after it experienced fertility and calf health issues. The tests confirmed the virus was present.

The complete herd was vaccinated against BVD and Mr Williams took part in a trial run by the RVC, which involved blood testing cows and youngstock, and monitoring for infectious diseases, including BVD. The results showed the BVD antibodies were present in unvaccinated youngstock.

"Vaccination had slowed the progress of BVD, but the youngstock results were indicating there was still active circulation of BVD in the herd and led us to search for persistently infected (PI) animals," said Mr Williams' vet, Sharon Wainwright, of The Fenton Veterinary Practice, Haverfordwest.

PI animals are a major source of infection and cannot be cured. They eventually have health issues and die.

Mr Williams now runs a closed herd and is "tag and testing" for the second year. This involves inserting an official identity tag into an animal's ear, which simultaneously takes a sample that is sent for testing.

He plans to continue testing for at least another year. No PIs have been found in the past two years and he is continuing to vaccinate all breeding stock. The herd is closed through using artificial insemination (AI) rather than buying in stock or bulls.

Mr Williams' approach is reinforced by his herd health plan, which was 80 per cent funded through the Welsh Government-financed Farming Connect whole farm plan.

Herd health planning is designed to create a partnership approach between farmers and vets, and identify problems before they reach a clinical stage. Mr Williams' plan covers all aspects of animal health including lameness, routine vaccinations and worming.

Eligible farmers can claim back 80 per cent of the costs of animal health planning through the whole farm plan service. For further information, telephone Eilw Evans on 07772 694116 or visit www.menterabusnes.co.uk/farmingconnect

Equine nutrition advice

LEISURE nutritionists have taken to the road to bring free nutrition support to horses and ponies around the country.

The service, run by Spillers, provides owners with feeding advice, together with the use of a portable weighbridge. Nicki Smith has joined the company to cover the south of England, while long-term Spillers leisure nutritionist Isabel Harker covers the north.

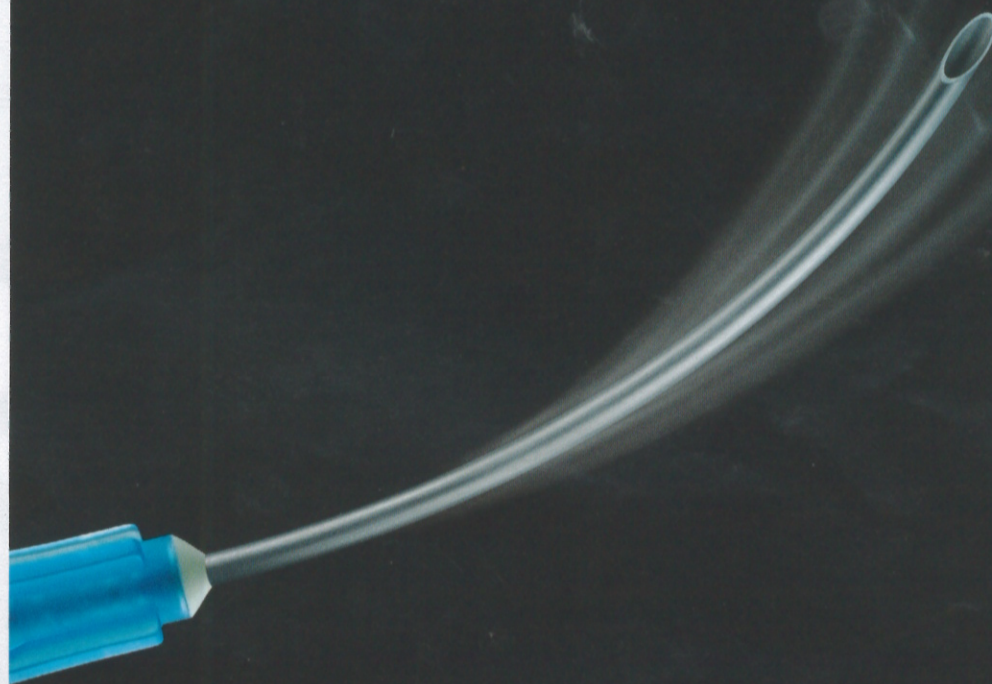
Choosing the right feed and maintaining the right weight are common concerns for many owners. The Spillers team will assess a horse's weight and individual feeding needs, and discuss any concerns or queries with owners.

They can also teach condition scoring and visit regularly to help monitor progress and fine-tune the feeding programme.

Owners are given a record card at the end of the session, showing the horse's current weight, condition score and suggested diet plan.

To find out more information, telephone 01908 226626 or visit www.spillers-feeds.co.uk

THE INJECTION THAT CAN'T WAIT TO START WORKING



Vetmedin Injection and Flavour Tablets contain pimobendan. UK: POM-V. Further information available from Boehringer Ingelheim Limited, Vetmedica Division, Bracknell, Berkshire, RG12 8YS, UK. Tel: +44 (0)1344 746959. Email: vetmedica.uk@boehringer-ingelheim.com. Date of preparation: Oct 2013. AHD 7854. Use Medicines Responsibly. (www.noah.co.uk/responsible).